

BOOMERANG®

★ *Versatile* ★ *Pliable* ★ *Washable* ★ *Twice the density of muscles*



- The first compensating filter used next to the patient
- Avoid overexposure of subtle peripheral lesions
- Opaque chain incorporated at the periphery, always beyond the skin
- Adheres vertically with very little pressure
- Resists alcohol, Zephiran® and heat

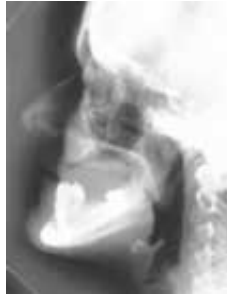
- SHOULDER
- LOWER MAXILLA
- D-1 to D-3
- ROTULE
- CEPHALOMETRY
- SUPERFICIAL BONE LESION



LOWER MAXILLA. The anterior part is not over-penetrated.



T-1 to T-3. On patients with prominent lower chest, these over-exposed vertebrae are protected by the inverted BOOMERANG.



CEPHALOMETRY. No more barium coating on the skin. Just place the thickest part of the BOOMERANG vis-à-vis the surface landmarks. If dust is washed away with water, it will hold vertically with very little pressure.



PATELLA. The lower anterior part is protected. But for knees in extension, the BOOMERANG 15° model or the LITTLE PRISM are preferable.



SUPERFICIAL BONE LESION.

Not over-exposed by tomography.

SPECIFICATIONS: 

FI-01 REGULAR BOOMERANG: L29 x W19 x

H4.5 cm approx.; 1.2 kg

FI-01A BOOMERANG with incorporated VELCRO

FI-01NC CHAINLESS BOOMERANG

FI-06 BOOMERANG 15°: L21 x W7 x H3.3 cm